

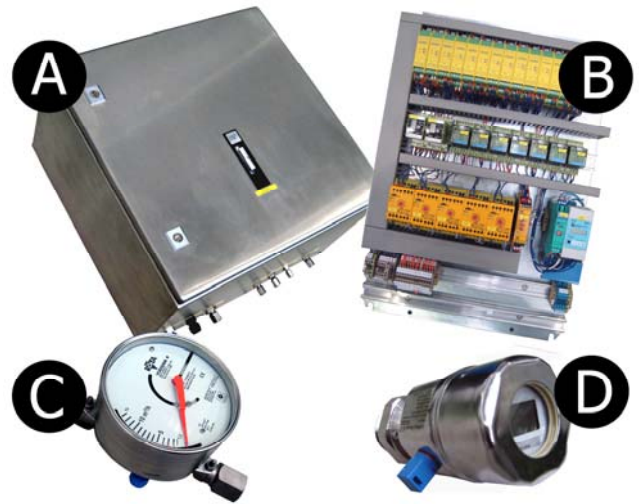
## 1801.2: InertoSafe<sup>®</sup> SIL 2

### Description

- SIL 2 certified according to EN61511
- ATEX certified
- Suitable for any kind of vessel
- DCS independent inertisation system with integrated logic
- Low maintenance



**ATEX**

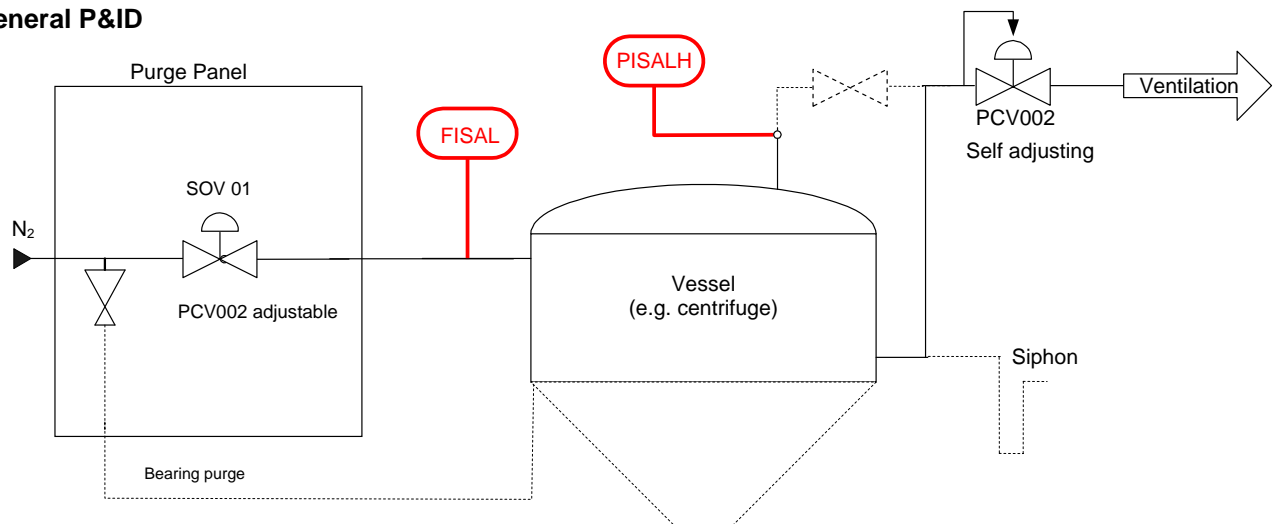


### Key Functions

The “InertoSafe<sup>®</sup> SIL 2” inertisation system is providing a safe and inert environment inside any vessel. After an initial purging process the system goes into a pressure maintaining mode for maximum safety. The system is based on pressure monitoring and is therefore failsafe and virtually maintenance free.

Applications which require inert vessels to eliminate explosion risks often demand increased safety measures for the entire system. InertoSafe<sup>®</sup> SIL 2 is certified SIL 2 according to EN61511-1:2004 and therefore suitable for any application requiring failsafe controls. InertoSafe<sup>®</sup> SIL 2 is designed to operate with any kind of primary control system. InertoSafe<sup>®</sup> SIL 2 provides a highly integrated and failsafe system. Two dual channel safety contacts are provided for external safety stop functions.

### General P&ID

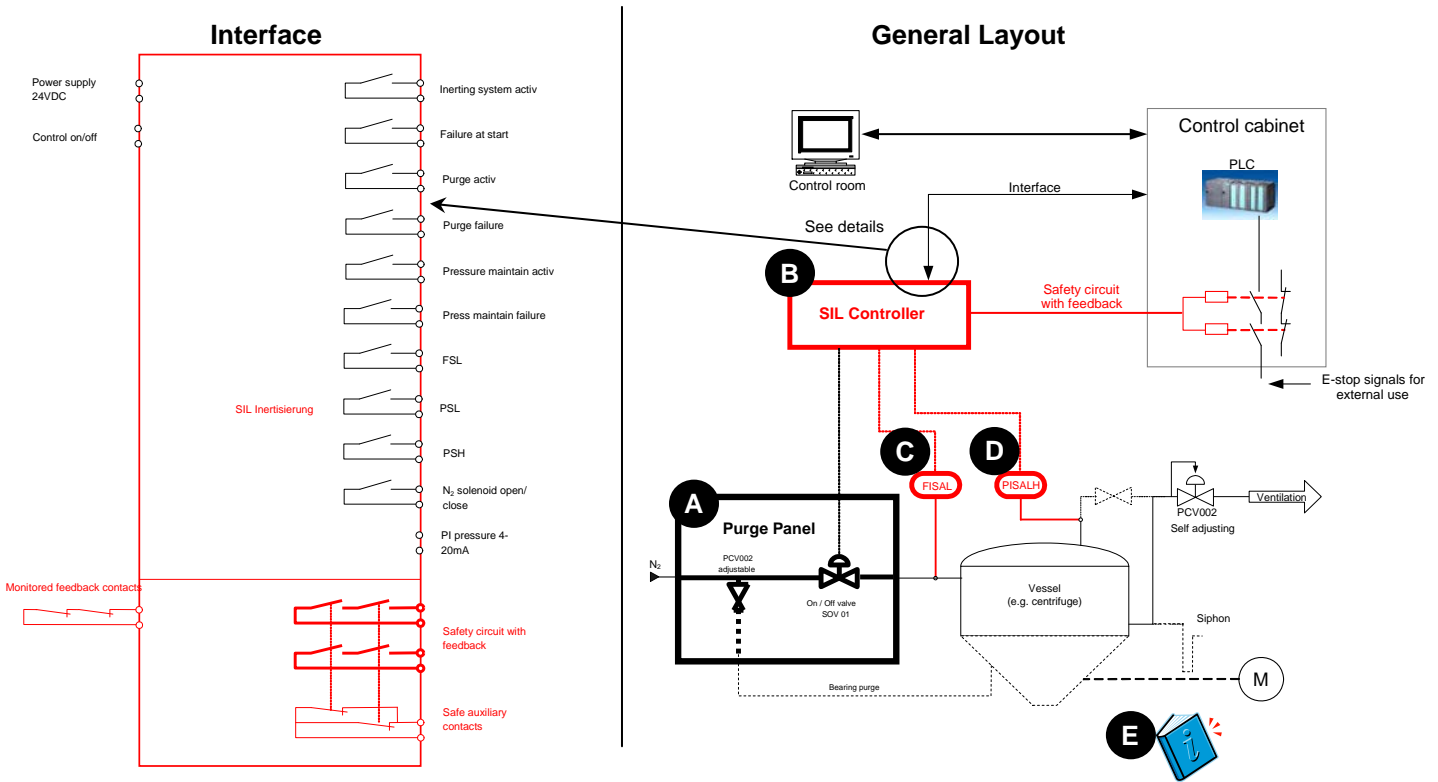


# 1801.2: InertoSafe<sup>®</sup> SIL 2

## Configuration

### The InertoSafe<sup>®</sup> SIL 2 system contains

- A** Purge panel in stainless steel for installation in the hazardous area
- B** Pre-wired SIL controller for installation in the safe area (optional enclosures available)
- C** Flowswitch type Rota Yokogawa RMA
- D** Pressure transmitter type Cerabar
- E** Operator manual and certificates



## Technical data

InertoSafe <sup>®</sup> SIL 2 System	
<b>Approvals</b>	SIL 2 acc. to EN61511-1:2004 UL certification for components
<b>Operation</b>	Operation with integrated controls
<b>Power supply</b>	24 V DC ± 10 %
<b>Max. power consumption</b>	2 A
<b>Admissible ambient temperatures</b>	Storage -20°C to +40°C Operation 0°C to +40°C

Purge Panel	
<b>Material</b>	Stainless steel
<b>Dimensions (W x H x D)</b>	500 x 500 x 300 mm
<b>ATEX approvals</b>	Zone 1
<b>Weight</b>	Approx. 18 kg

SIL Controller	
<b>Construction</b>	Rack mounted (also available in enclosure)
<b>Dimensions (W x H x D)</b>	500 x 700 x 250 mm
<b>ATEX approvals</b>	N/A (optionally also available for installation in Zone 2 or Zone 1)
<b>Interface</b>	Digital and analog I/O
<b>Weight</b>	Approx. 30 kg